



**UPPER COLORADO RIVER  
FIRE AND AVIATION MANAGEMENT UNIT**

BLM • NORTHWEST DISTRICT  
BLM • SOUTHWEST DISTRICT  
USFS • WHITE RIVER NATIONAL FOREST

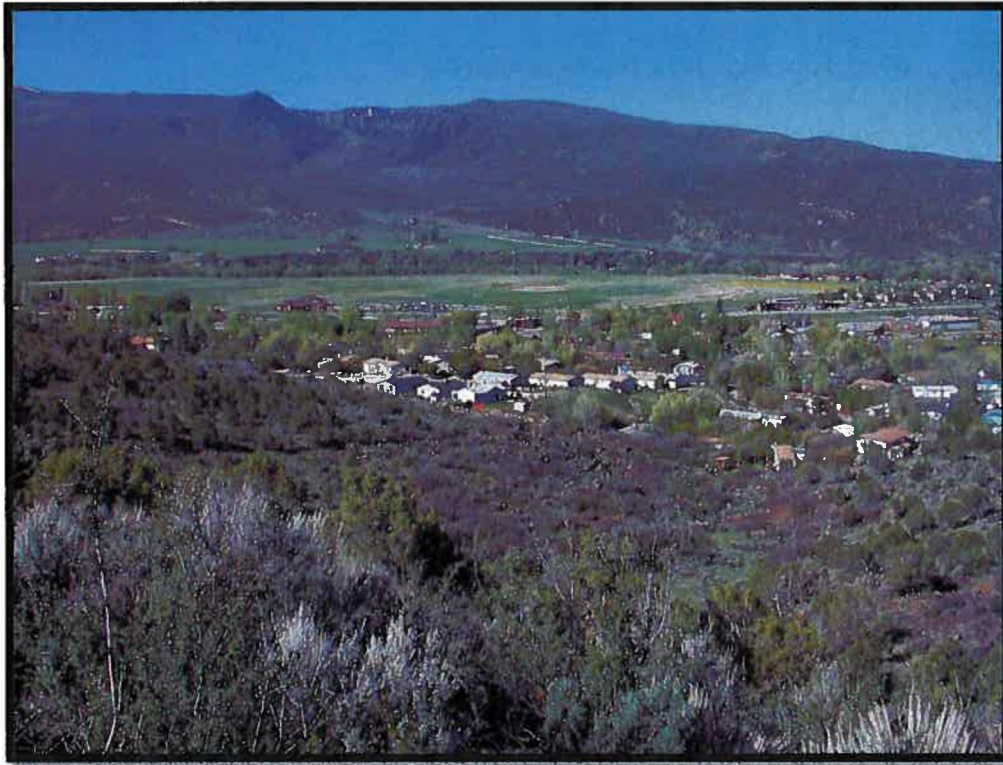


**Overview of the 2004 UCR BLM Cut & Pile followed  
by Pile Prescribed Burn Project  
in El Jebel Impacted by the 2018 Lake Christine Fire**



Post fire 2018 picture of Lake Christine Fire where it burned into the Community of El Jebel

These BLM lands are Colorado River Valley Field Office



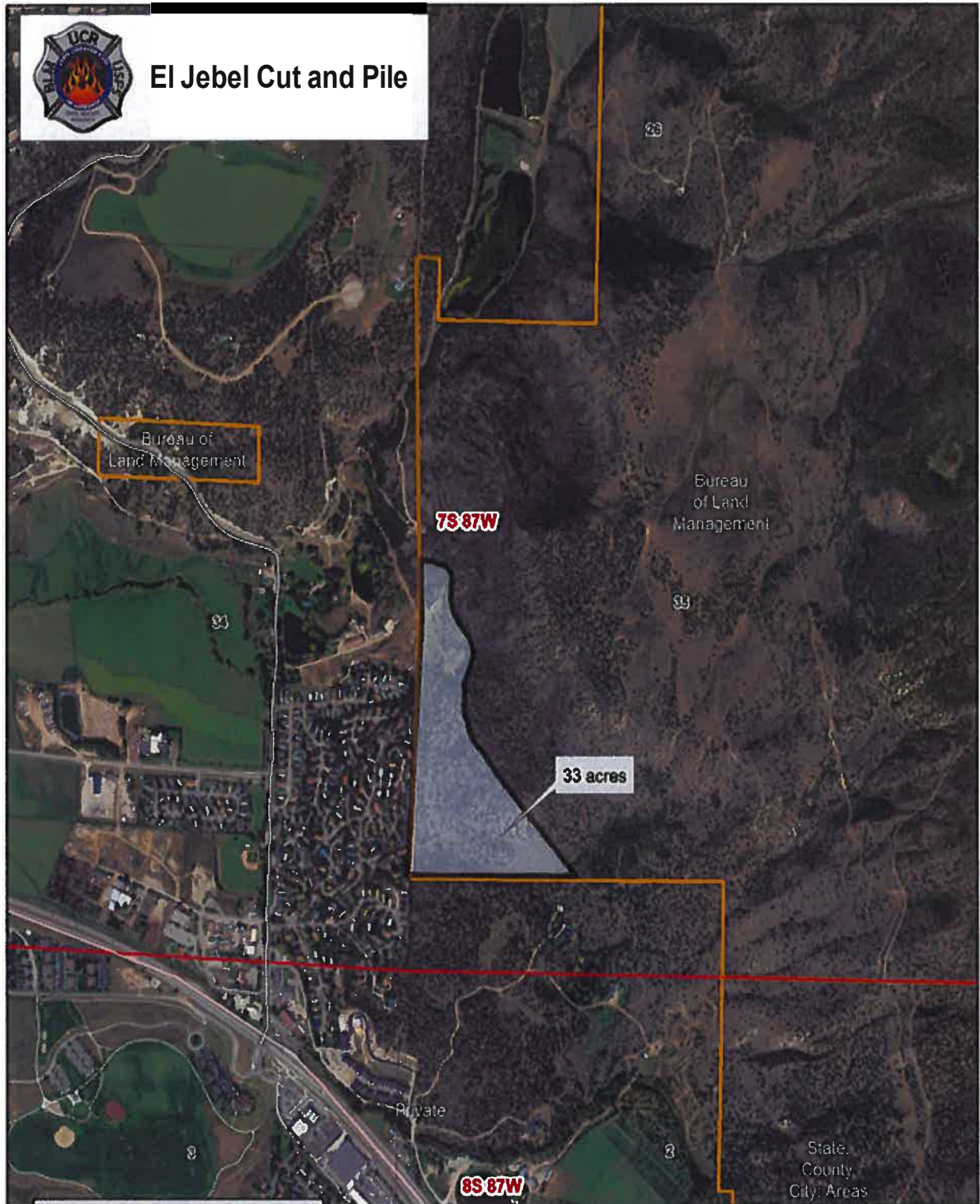
This 2004 photo is of the fuels treatment right after it was being cut and piled in. Note the brown piles that were burned the next winter. The line on the hill side was the edge of the BLM and private.



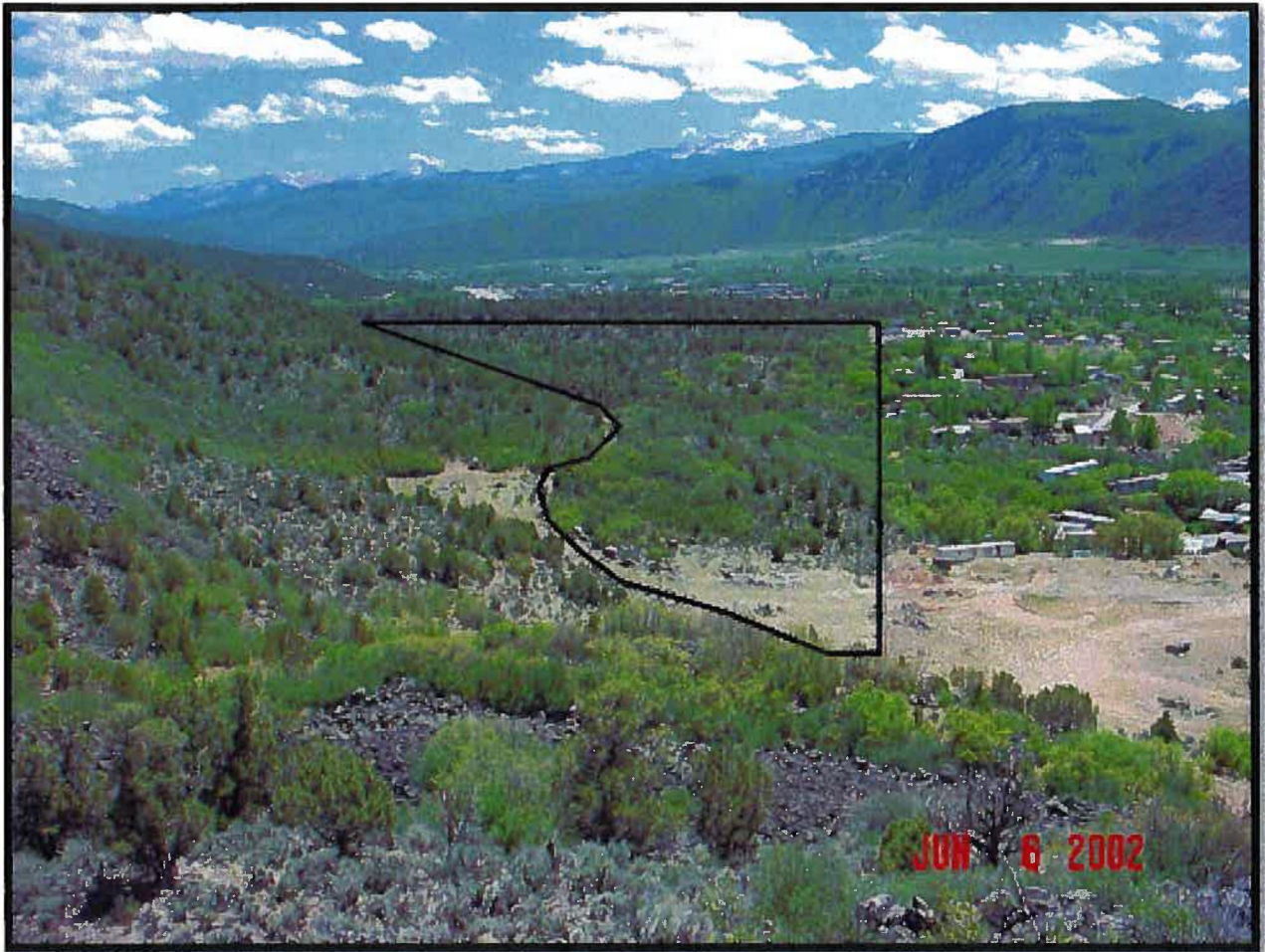
2004 photo. Here is where the BLM boundary went right up adjacent to the structure. All the brown on the ground was cut oak and pulled away from the structure piled then burned later.



## El Jebel Cut and Pile



Map of this 2004 Fuels Treatment Unit



Here is a 2002 photo used during the planning process final treatment was larger but this shows how thick the fuels were before the 2004 fuels treatment.



**Hazard Fuel Reduction-El  
Jebel**

- Thin hazardous fuel accumulations using chainsaws and mechanized equipment.
- Reduce pinyon-juniper woodlands by 50%.
- Reduce Gambel oak by 50-75%; use irregular pattern leaving behind scattered islands of oak.
- Treat Gambel oak stumps with herbicide to reduce sprouting.
- Reduce sage by 25% by cutting in an irregular pattern in sage parks.



2004 photo. The fuel break partially complete right adjacent to the structures.  
In front of the crew had not been cut yet. All piles were burned.



2004 Photo. Fuels on the left were not yet cut showing how much fuel loading  
was present previous to the fuels treatment.



Pile Burning during December 2004 during wet/snow conditions by UCR BLM/FS Firefighters.

